



NetCorps Kenya

STRATHMORE UNIVERSITY 7TH ICT CONFERENCE

**EMERGING Technologies and Trends and the Future of ICT Sector in
Kenya
September 9th, 2006**

**Contact
Joseph Maruti
Country Director
Netcorps Kenya Program
P.O.Box 21428, Nairobi 00505
jmaruti@globalnetcorps.org
+254 20 6751385
+254 725 153 971**

Critical Success Factors

- **Understanding and Respecting Local Gender Realities**
- **The Importance of Local Ownership**
- **Demand-driven Response to Community Needs**
- **Regional/Local Champions play a critical role**
- **Involvement of local stakeholders and the power of convergence**
- **Capacity building involves cascading processes**
- **Participation takes time and resources**

Understanding and Respecting Local Gender Realities

- **Factors that affect the participation of women in capacity building Programs.**
 - **Flexibility of the timing of the training**
 - **The accessibility and the location of the access centres**
 - **The gender of the facilitator**
 - **The composition of the class (ratio of men to women)**
 - **The fear of new technology**
 - **Support (or lack thereof) of family members**

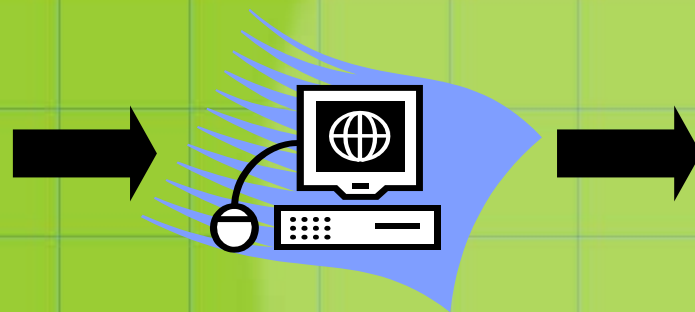
The Importance of Local Ownership

- **Are the people targeted involved with the design and planning of the program?**
- **Is the program aligned with the policies and goals of the government?**

Demand-driven Response to Community Needs



A craftswoman in
Kenya...



NetCorps
Kenya



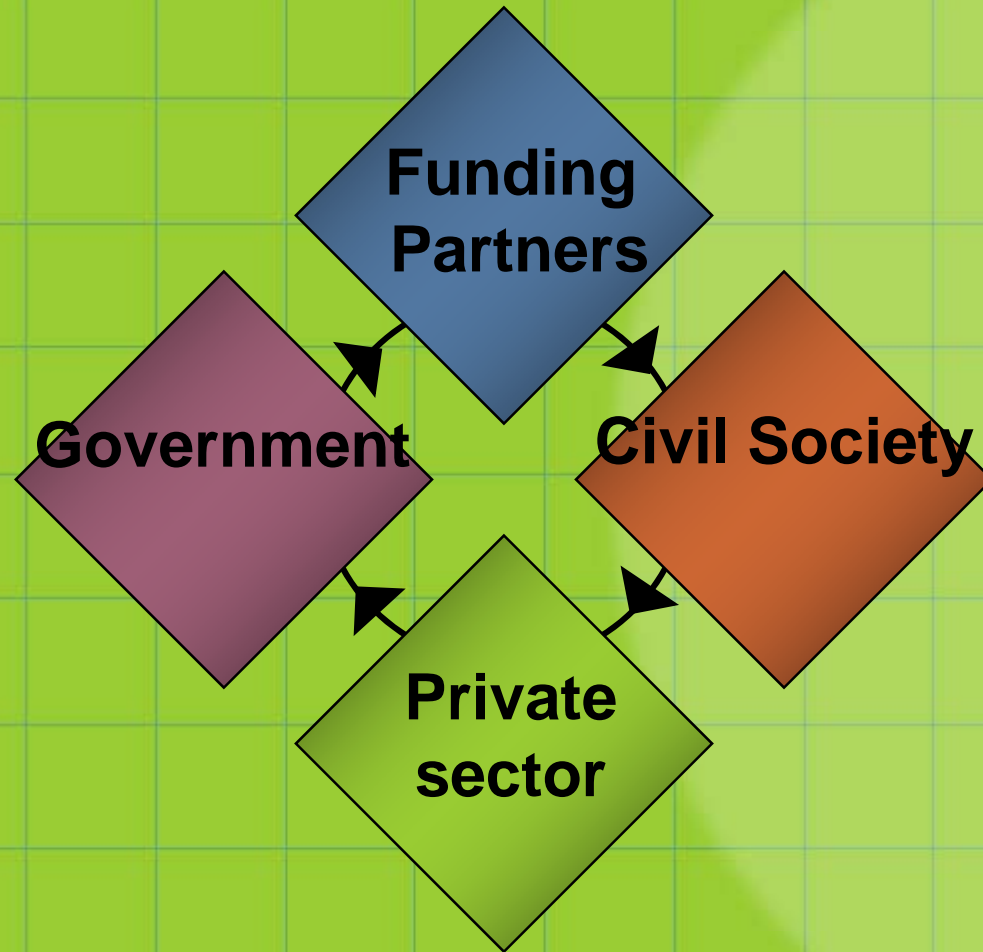
...has access to other
markets around the world

The Role of Regional/Local Champions



- A Champion is a respected, committed and influential person who actively supports and promotes the cause.

Involve local stakeholders



Building partnerships with likeminded people and organisations ensures the maximum use of available resources.

Capacity Building involves Cascading Processes



Participation takes time and resources

- **Invest quality time and resources during planning and implementation.**
- **Design tests to chart progress of the beneficiaries to boost confidence.**
- **This also demonstrates to them the importance of their involvement.**